

**Sean Vegezzi      DMYCC**

**Print Catalogue**





*DMYCC* by Sean Vegezzi is a site specific work made within the Chatham Square provision of the Second Avenue Subway in New York City between 2005 and 2017.

As a site-specific project, *DMYCC* took on many contours and guises, responding to the immediate contexts and external constraints imposed upon the space. This portfolio of prints is the result of one of those constraints. The photographs were initially selected and editioned in 2012 during the preparatory stages of an earlier iteration of *DMYCC* – a full-scale exhibition – which, immediately before completion, was unexpectedly halted and abandoned.

## DMYCC 2012 Exhibition plan

### Sixty-five (65) Archival Inkjet Prints from 35mm negative film

- Color - Sixty-Five

### Twenty-eight (28) Archival Inkjet Prints from 35mm negative film

- B/W - Twenty-Eight

### Other works

- One Drawing
- Two Found Objects

—

The majority of the works were intended to be mounted on hand-made panels designed to function as both display walls and sculptural elements within the space.

The panels were constructed as follows:

- 4 x 8' AC grade plywood sheets, milled to 4 x 2' to clear the dimensions of the entryway to the space
- Side bracing constructed out of 2 x 4' lumber
- Panels placed on 16 x 8 x 8" concrete blocks
- A treatment of: spackling paste, primer, enamel and assorted hardware
- All photographic prints were to be mounted with permanent double-sided tape

Any works not mounted on the panels were intended to be hung directly on the primed surface of the tunnel walls.

—

A lighting system comprised of T8 fluorescent fixtures was installed using bar clamps and was powered by the preexisting electrical lines in the space.

## DMYCC 2016 Exhibition

In the fall of 2016, the display panels and the lighting system were the only components of the **DMYCC 2012** exhibition plan that were installed as originally planned.

While no photographic prints were on display in the exhibition, the original inventory of prints are now available for purchase. The following edition structure constitutes the very first and only printings of the photographs in this series. For pricing and availability, please contact [studio@seanvegezzi.com](mailto:studio@seanvegezzi.com)

### **Edited Prints- Three Sets of Ninety-three works:**

- Two sets {**Edition Nos. 1/3 + 2/3**} are available for individual print sales
- One complete set {**Edition No. 3/3**} is intended to be sold as a complete portfolio, the contents of which will not be permitted to be sold or exhibited individually

### **Artist Proofs- Two Sets of Ninety-three works:**

- One set {**AP1/2**} is intended for donations or personal gifts from the artist to galleries, institutions or private individuals
- One set {**AP2/2**} is intended to remain within the artist's archive

All artworks (with the exception of those displayed on pg. 46 & pg 48) are untitled. Call numbers from the artists archive are used in lieu of titles.

Each work is accompanied by a signed certificate listing the photograph's archive call number, the project name and the applicable edition / AP information.

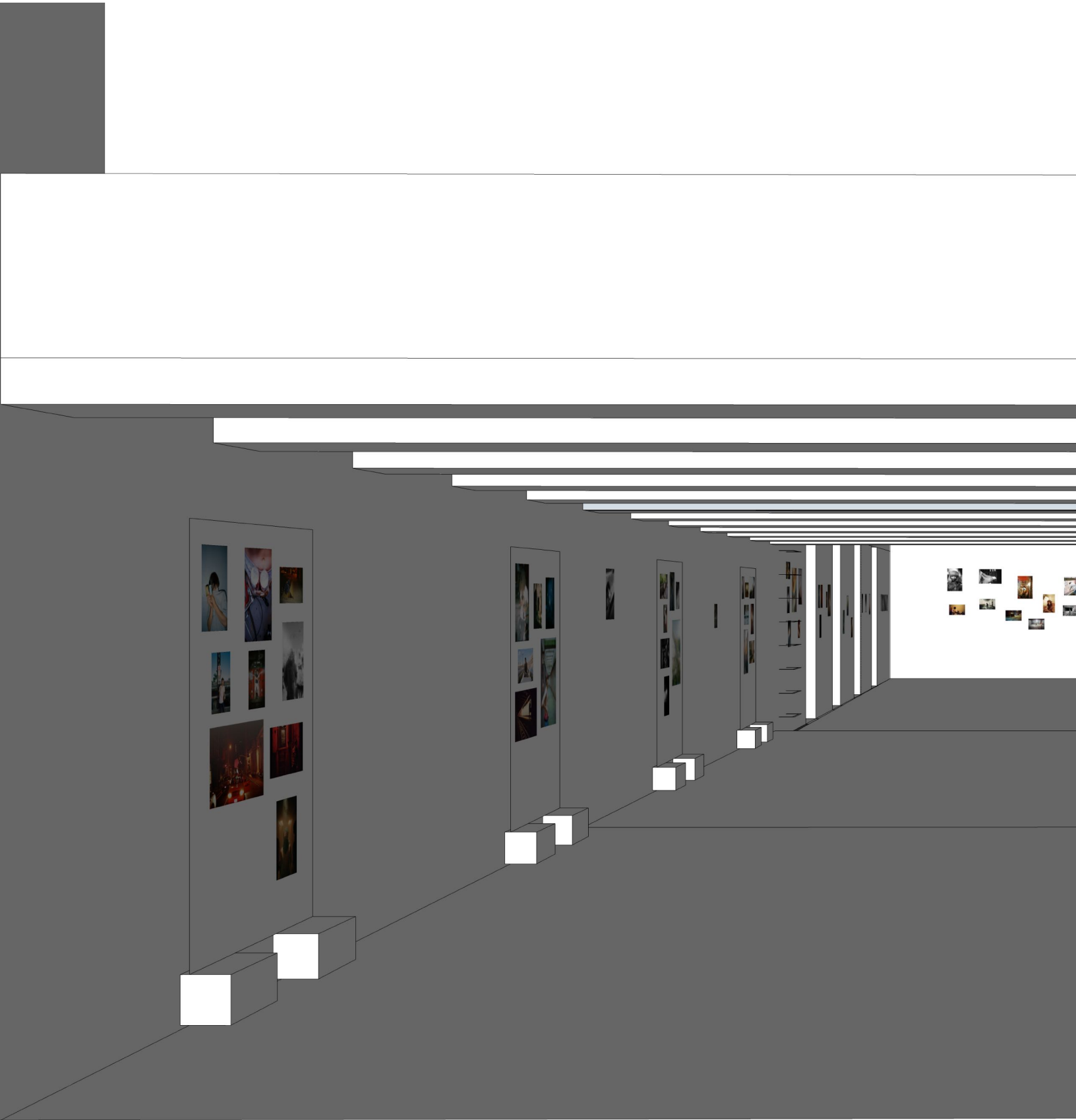
The print size for each photograph in these limited-edition sets are fixed at the size originally selected for the photograph in the DMYCC 2012 exhibition.







The following pages are an index of the available works from the series. The photographs appear in the sequence in which they were intended to be viewed in the 2012 DMYCC exhibition. A selection of floor plans created in 2012 precede the series, to illustrate the manner in which the works were to be displayed.

















090500\_ANDREW\_ASCENDS\_19

9 1/4 x 14 1/4"





100303\_FULTON\_STATION\_R2\_21

12 1/4 x 20"



100324\_SPENCER\_NORTH\_MOORE\_  
GARAGE\_19

6 1/2 x 10"





081015\_AMTRAK\_32

16 x 10 1/4"



090000\_AMTRAK\_35

14 x 9"





110502\_SPENCER\_7\_LINE\_  
MAIN\_ST\_34

17 7/8 x 12 1/8"





090421\_GRAHAM\_SHUTTLE\_R2\_03

12 3/4 x 20"







110531\_SPENCER\_7\_LINE\_  
CONSTRUCTION\_02





110531\_SPENCER\_7\_LINE\_  
CONSTRUCTION\_07

9 1/2 x 14"



100303\_CHRIS\_MIKE\_FULTON\_  
TRANSIT\_CENTER\_19





100419\_CHRIS\_5\_BEEKMAN\_36

15 5/8 x 24"



100622\_JERSEY\_TRACKS\_35

9 x 14"





100622\_JERSEY\_TRACKS\_27

15 5/8 x 24"



090507\_GRAHAM\_FDR\_29

9 x 14"





091223\_FULTON\_TRANSIT\_  
CENTER\_33

9 x 14"





111109\_SPENCER\_FULTON\_FISH\_  
MARKET\_23

11 3/4 x 18"







100817\_CYRUS\_HELLGATE\_  
BRIDGE\_16





091002\_SPENCER\_GARAGE\_  
ROOF\_36

13 1/8 x 20"



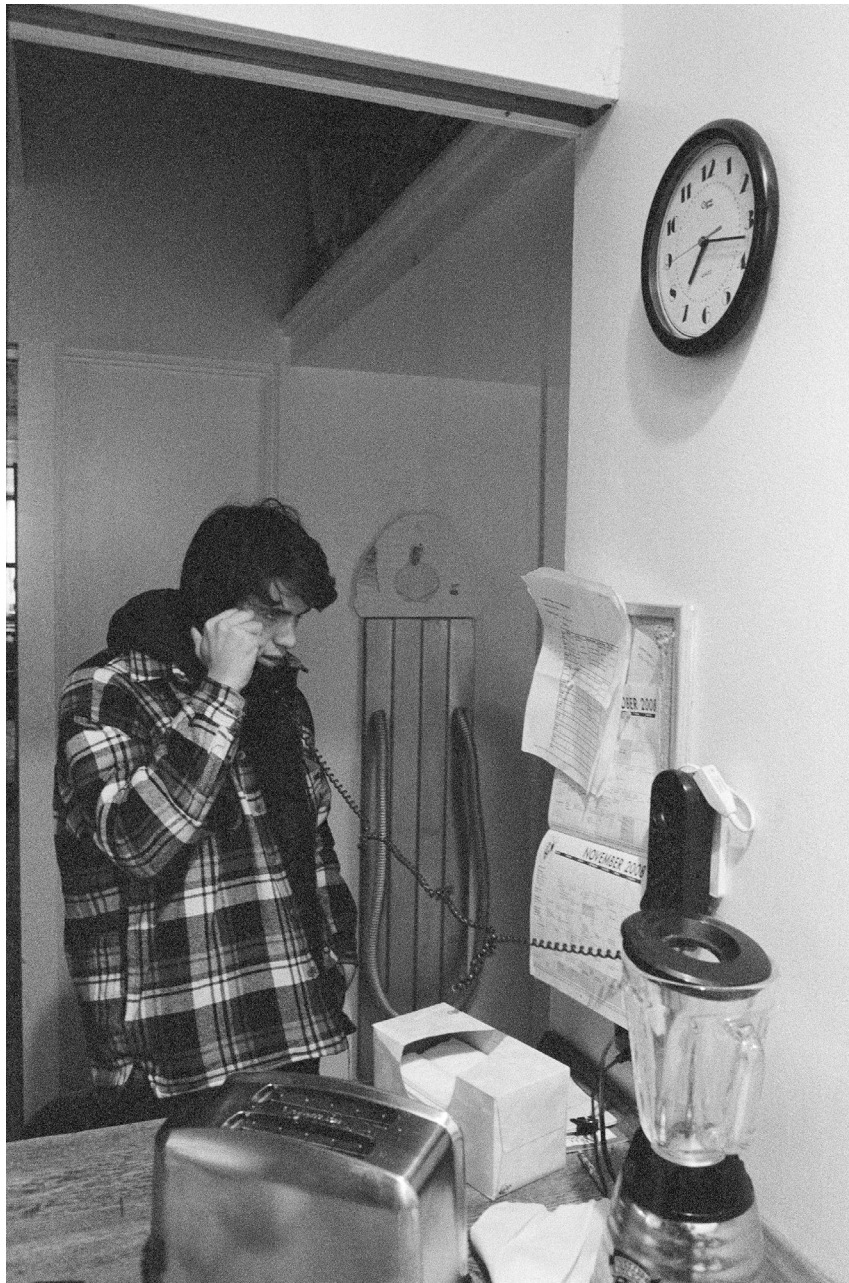


100303\_CYRUS\_TERRACE\_28

6 1/4 x 10"







091100\_GRAHAM\_KITCHEN\_02

12 7/8 x 20"



100821\_CHRIS\_SCOPING\_26

9 1/8 x 20"











**110305\_ANCHORAGE\_INFECTION**

Phlegm on copy paper.

8.5 x 11"



**EDGAR**

Dye-sublimation print

4 x 6"



100526\_BK\_BRIDGE\_  
ANCHORAGE\_26

7 x 4.5"





100303\_CYRUS\_TERRACE\_14

7 x 4.5"



100430\_SEDGWICK\_STATION\_34

6 1/4 x 10"





100526\_SAG\_HARBOR\_R2\_36

10 x 6.5"





100526\_SAG\_HARBOR\_R4\_01

14 x 9 1/8"





100000\_FULTON\_TRANSIT\_  
CENTER\_22

20 x 12 7/8"



100114\_FULTON\_TRANSIT\_  
CENTER\_19

4 5/8 X 7"







091223\_BARRON\_CLAIBORNE\_20

6 5/8 x 10"



100303\_ASTOR\_STATION\_19

10 x 6 5/8"





090810\_JERSEY\_TRACKS\_R3\_03

16 x 10"



090720\_CYRUS\_GRAHAM\_  
VESUVIO\_PARK\_16





100727\_BOYS\_VESUVIO\_PARK\_13

9 1/4 x 14"





100526\_SPENCER\_19TH\_STATION\_  
PATH\_10

12 7/8 x 20"



090719\_REDBIRD\_RIDE\_03

16 x 10 3/8"







081023\_CLARA\_CP\_LAYUP\_11

6 5/8 x 10"





090925\_CENTRAL\_PARK\_LAYUP\_07

14 x 8 3/4"



100303\_KIDS\_HATCH\_12

9 1/4 x 14"





100324\_BUS\_DEPOT\_17

6 7/8 x 10"



100324\_SPENCER\_NORTH\_  
MOORE\_GARAGE\_35

6 1/2 x 10"





090501\_GRAHAM\_SURFING\_32

16 x 10 1/2"





**100526\_SAG\_HARBOR\_R3\_30**

15 7/8 x 24"



110104\_MERCER\_BLIZZARD\_R1\_17

9 1/8 x 14"







081004\_OBAMA\_ELECTION\_R3\_06

10 x 16"



100622\_MERCER\_CHINATOWN\_  
CAT\_37

12 5/8 x 20"





100526\_SAG\_HARBOR\_R3\_14

8 x 12"





091201\_CHRIS\_BLUE\_TUNNEL\_18

9 1/8 x 14"



090421\_GHOST\_YARD\_15

14 x 8 3/4"





091201\_FULTON\_TRANSIT\_  
CENTER\_R2\_35

20 x 12 3/4"





080913\_CP\_VENT\_PLANT\_R2\_27

15 5/8 x 20"



100500\_CHRIS\_CREDIT\_CARD\_10

9 x 14"





100324\_SEAN\_RACKING\_31

10 1/2 x 16"





080400\_QUEENS\_PLAZA\_  
TUNNEL\_16

10 x 6 1/2"



091223\_BLIZZARD\_R2\_30

9 1/4 x 14"





090810\_DRINKING\_IN\_FULTON\_  
STATION\_32

20 x 13 1/4"





090402\_CHRIS\_EXTINGUISHER\_02

14 x 9"



100821\_CHRIS\_SCOPING\_29

13 1/4 x 20"







100303\_ASTOR\_STATION\_37

14 x 9 1/8"



100303\_CYRUS\_TERRACE\_33

9 1/8 x 14"





110104\_SEAN\_CYRUS\_FROZEN\_  
HANDS\_29

9 1/8 x 14"





090507\_INTREPID\_32

14 7/8 x 24"



100727\_BOYS\_VESUVIO\_PARK\_36

12 3/4 x 20"





100303\_ASTOR\_STATION\_15

6 5/8 x 10"







110327\_BK\_BRIDGE\_ANCHORAGE\_34

9 1/8 x 14"



090300\_MONTAGUE\_TUNNEL\_33

9 1/8 x 14"





100303\_CYRUS\_TERRACE\_07

9 x 14"



090820\_ANDREW\_NO\_CLEARANCE\_10

6 5/8 x 10"





090820\_ANDREW\_NO\_CLEARANCE\_19

13 1/8 x 20"







101115\_JERSEY\_TRACKS\_R1\_30

10 1/2 x 16"





101115\_JERSEY\_TRACKS\_R1\_36

9 x 14"





101115\_JERSEY\_TRACKS\_R2\_08

9 3/8 x 14 1/8"







100303\_AMTRAK\_SNOW\_16

9 1/8 x 14"





100303\_AMTRAK\_SNOW\_26

9 3/8 x 14"



100303\_AMTRAK\_SNOW\_34

10 1/2 X 16"











100526\_SPENCER\_FULTON\_  
TRANSIT\_CENTER\_20

8 3/4 x 14"



100526\_SPENCER\_FULTON\_  
TRANSIT\_CENTER\_36





100526\_SPENCER\_FULTON\_  
TRANSIT\_CENTER\_30

8 3/4 x 14"





100430\_SPENCER\_BRONX\_R2\_27

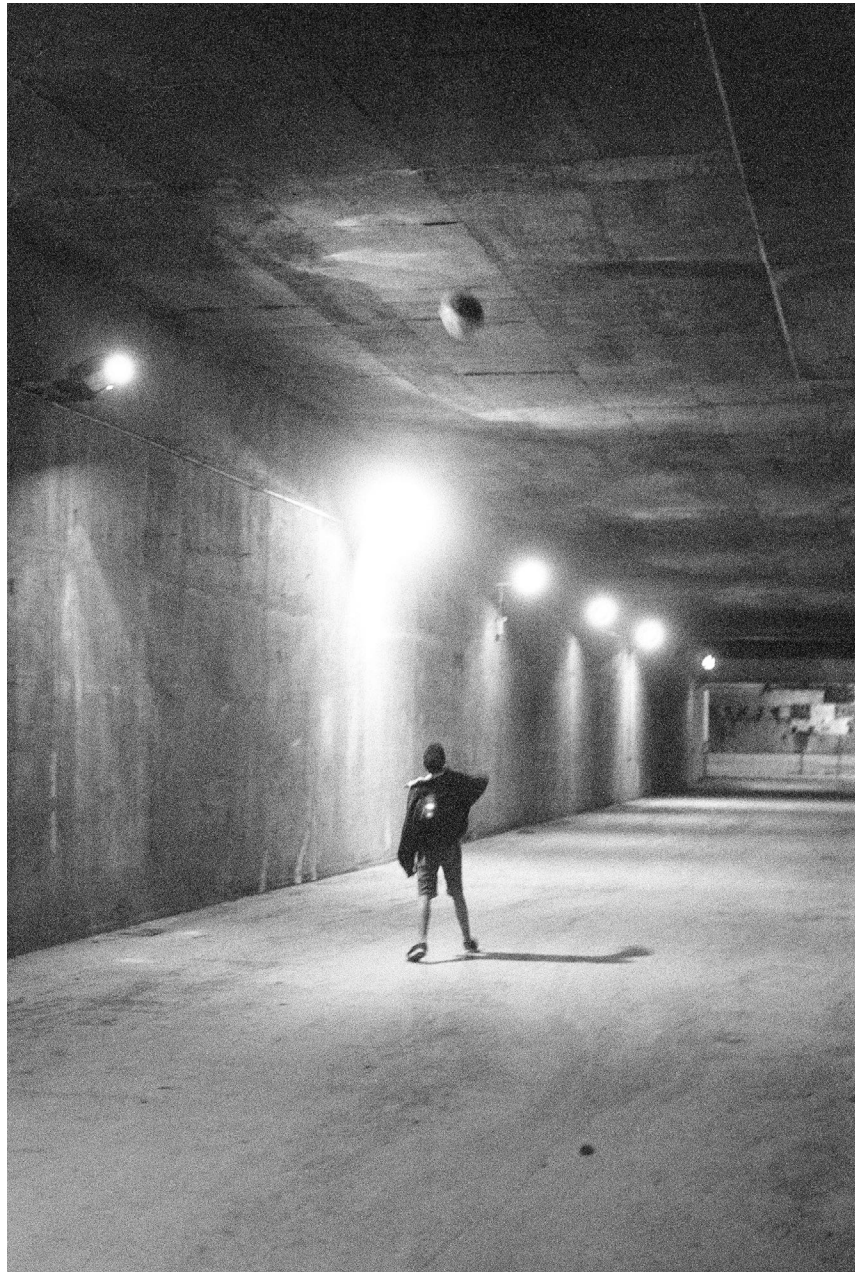
8 3/4 x 14"



100430\_SPENCER\_BRONX\_R2\_34

8 3/4 x 14"

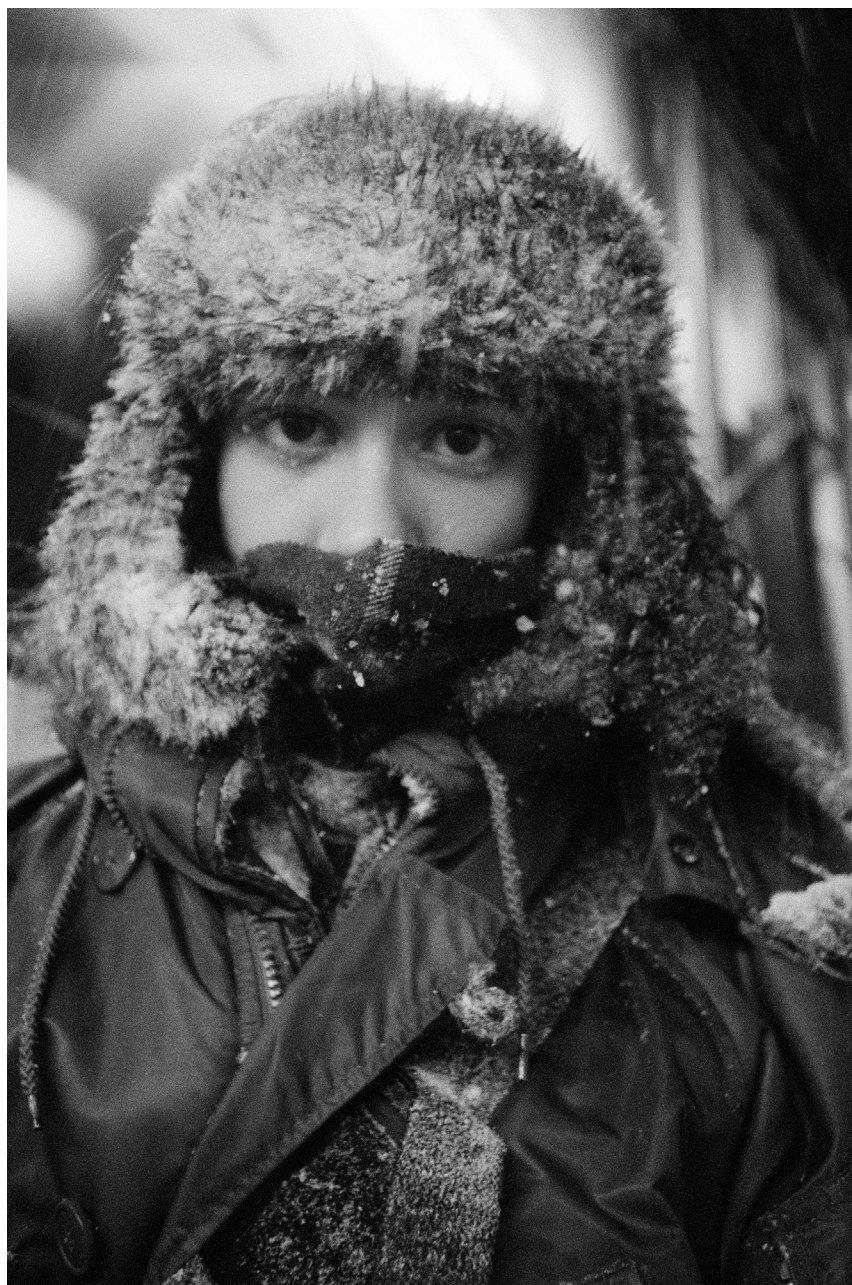




100526\_SPENCER\_FULTON\_  
TRANSIT\_CENTER\_17







110104\_MERCER\_BLIZZARD\_R1\_23

13 1/8 x 20"



080400\_QUEENS\_PLAZA\_TUNNEL\_31

14 x 9 1/8"

115





090501\_GRAHAM\_SURFING\_03

20 x 12 7/8"



090402\_CHRIS\_EXTINGUISHER\_24

14 x 9 1/4"





091223\_BLIZZARD\_R1\_13

14 x 9 1/8"





090830\_JACKSON\_ROOM\_24

13 1/8 x 20"





110613\_CENTRAL\_PARK\_LAYUP\_R1\_17

14 x 9 1/2"



100303\_INWOOD\_TUNNELS\_R1\_33

10 3/8 x 16 1/8"





100526\_GRAHAM\_5\_BEEKMAN\_30

10 5/8 x 16"



081015\_AMTRAK\_08

14 x 9 1/4"





100303\_CHRIS\_MIKE\_FULTON\_  
TRANSIT\_CENTER\_27

6 x 10"



090913\_AJ\_7\_LINE\_20

9 1/8 x 14"





081228\_RAINEY\_PARK\_16

16 x 10"





